



# COUPLINGS & ADAPTORS

For your nearest branch visit  
[www.frazer.eu.com](http://www.frazer.eu.com) or see pages 175-190

## Viking Johnson – MaxiFit (Extended Range)

The Viking Johnson pipe jointing system for plain ended pipes is used throughout the world due to the benefits and advantages it gives designers, installers and end users, together with the substantial savings which are made on installation costs.

Description	Size (OD Range mm)	Frazer Code
40 VJ RIL MaxiFit Coupling	47.9-59.5	75100010
50 VJ RIL MaxiFit Coupling	59.5-72.0	75100020
80 VJ RIL MaxiFit Coupling	88.1-102.4	75100040
100 VJ RIL MaxiFit Coupling	107.2-127.8	75100060
150 VJ RIL MaxiFit Coupling	158.2-181.6	75100100
175 VJ RIL MaxiFit Coupling	192.9-209.0	75100110
200 VJ RIL MaxiFit Coupling	218.1-235.0	75100120
225 VJ RIL MaxiFit Coupling	250.0-267.0	75100130
250 VJ RIL MaxiFit Coupling	270.0-289.0	75100140
300 VJ RIL MaxiFit Coupling	315.0-332.0	75100145
300 VJ RIL MaxiFit Coupling	322.9-339.4	75100150
65 VJ RIL MaxiFit Coupling	72.2-85.0	75100030
125 VJ RIL MaxiFit Coupling	138.9-153.2	75100080
300 VJ RIL MaxiFit Coupling	332.0-349.0	75100160
350 VJ RIL MaxiFit Coupling	351.0-368.0	75101190
350 VJ RIL MaxiFit Coupling	374.5-391.5	75101200
350 VJ RIL MaxiFit Coupling	394.3-411.3	75101210
400 VJ RIL MaxiFit Coupling	418.2-435.2	75101220
450 VJ RIL MaxiFit Coupling	476.0-493.0	75101225
500 VJ RIL MaxiFit Coupling	527.0-544.0	75101245
600 VJ RIL MaxiFit Coupling	630.0-647.0	75101255



# VIKING JOHNSON

World leaders in pipe joints and repair products

### MaxiFit Range

A range of universal pipe couplings that represent the very latest in mechanical pipe coupling technology. MaxiFit products are designed to accommodate plain ended pipes with different outside diameters, thus reducing the need for various products on site. One fitting is able to connect steel, ductile iron, PVCu, cast iron and asbestos cement pipes.

### Features

- Products are pre-assembled allowing quick and efficient installation
- Gaskets feature a series of 'slide easy' ribs, designed to reduce installation friction
- Components are coated with thermoplastic polymer, Rilsan Nylon 11 which meets the stringent performance standards of WIS 4-52-01 (Part 1)
- Bolts are coated with Sheraplex, a compound of zinc sheradising and low friction polymeric coating, that meets WIS 4-52-03
- As with all Viking Johnson products, MaxiFit is designed to outlast the pipes on which it is fitted
- All MaxiFit products have a test pressure rating of 24bar (350psi) and are suitable for 16bar (230psi) working pressure

**For details of your nearest branch see pages 175-190**

## MaxiStep (Primary Core Range)

Description	Size (OD Range mm)	Frazer Code	Supplier Code
80 x 100 VJ RIL MaxiStep Coupling	88.1-102.4/107.2-127.8	75300060	VJ00025
125 x 150 VJ RIL MaxiStep Coupling	132.2-146.0/158.2-181.6	75300180	VJ00026
225 x 250 VJ RIL MaxiStep Coupling	250.0-267.0/270.0-289.0	75300230	VJ00016

Designed to provide transition between pipes of different nominal bores, irrespective of the materials involved. This range caters for cast iron, asbestos cement, steel, ductile and PVCu pipes.

MaxiStep couplings allow for a total angular deflection of +or -6 degrees.



## MaxiDaptor (Primary Core Range)

Description	Size (OD Range mm)	Frazer Code	Supplier Code
50 VJ RIL MaxiDaptor	59.5-72.0	75500010	VJ00057
65 VJ RIL MaxiDaptor	60.0-65.0	75500020	VJ00206
65 VJ RIL MaxiDaptor	72.2-85.0	75500025	VJ00182
80 VJ RIL MaxiDaptor	88.1-102.4	75500030	VJ00005
100 VJ RIL MaxiDaptor	107.2-127.8	75500050	VJ00001
125 VJ RIL MaxiDaptor	132.2-146.0	75500060	VJ00232
125 VJ RIL MaxiDaptor	138.9-153.2	75500070	VJ00082
150 VJ RIL MaxiDaptor	158.2-181.6	75500090	VJ00003
175 VJ RIL MaxiDaptor	192.9-209.0	75500100	VJ00019
200 VJ RIL MaxiDaptor	218.1-235.0	75500110	VJ00008
225 VJ RIL MaxiDaptor	250.0-267.0	75500120	VJ00023
250 VJ RIL MaxiDaptor	270.0-289.0	75500130	VJ00010
300 VJ RIL MaxiDaptor	322.9-339.4	75500140	VJ00011
300 VJ RIL MaxiDaptor	332.0-349	75500150	VJ00047

Flange adaptors designed to join pipes of various materials and outside diameters to flanges of the same or nominal bores. MaxiDaptor flanges cover a range of drillings, including ISO 7005-1:1992, BS10:1962 and ANSI B16.2 & B16.5.

All MaxiDaptors with the exception of the 332-349 are compatible with both PN10 and PN16.

MaxiDaptor caters for a total angular deflection of +or -3 degrees.



## EasiClamp (Primary Core Range)

Description	Size (OD Range mm)	Frazer Code	Supplier Code
50 VJ RIL EasiClamp c/w Boss	66.0-75.0	77700010	VJ00117
80 VJ RIL EasiClamp c/w Boss	92.3-103.0	77700030	VJ00013
100 VJ RIL EasiClamp c/w Boss	115.0-125.6	77700040	VJ00007
150 VJ RIL EasiClamp c/w Boss	166.0-181.2	77700060	VJ00027

It is estimated that in many countries up to 30% of all treated water is lost from distribution pipelines through leakage. EasiClamp is a robust, high strength repair clamp that is designed to help combat this wastage. EasiClamp offers the end user a quick, guaranteed, first time seal on any type of pipe.

N.B. If the extent of the pipe damage is greater than the diameter of the clamp, it is recommended that a cut out repair is undertaken.

## Features

- Unique 'Waffle' gasket guarantees a first time permanent seal
- A pipe outside diameter tolerance range of up to 26mm
- Ductile and/or malleable iron or steel bodies that reinforce the pipeline and help to form the seal
- Quick and easy assembly
- Sizes DN50/2" to DN600/24": all components are coated with Rilsan Nylon 11 as standard
- Pressure Rating – 16bar (230psi) working pressure/24bar (350psi) test pressure
- Size range DN50/2" to DN600/24"

## AquaGrip (Primary Core Range)

Description	Size (OD Range mm)	Frazer Code	Supplier Code
125 VJ RIL AquaGrip Coupling SDR11	–	78200050	VJ00053
90 x 80 VJ RIL AquaGrip FLG Adaptor	–	78200130	VJ00044
125 x 100 VJ RIL AquaGrip FLG Adaptor	–	78200170	VJ00030
180 x 150 VJ RIL AquaGrip FLG Adaptor	–	78200210	VJ00033

A range of fittings developed in response to demand for a simple, high performance mechanical method of jointing polyethylene pipe. Specifically designed to support and grip PE pipe to prevent pipe collapse and pullout.

## Features

- All weather installation, no need for shelters, can be installed under wet conditions, even under water
- No need for fusion jointing equipment when unexpected problems arise
- Positive gripping action ensures full axial thrust restraint on all sizes up to and including 450mm
- Designed to equal or exceed the pressure capabilities of MDPE (PE80) and HDPE (PE100) pipe
- A suitably calibrated torque wrench is the only specialist tool required for sizes up to and including 400mm
- Rilsan Nylon coated flange body and clamp bands (other coatings available on request)

## AquaGrip (Extended Range)

Description	Size (OD Range mm)	Frazer Code	Supplier Code
63 VJ RIL AquaGrip Coupling SDR11	–	78200005	VJ00505
90 VJ RIL AquaGrip Coupling SDR11	–	78200010	VJ00518
90 VJ RIL AquaGrip Coupling SDR17	–	78200020	VJ00100
63 x 50 VJ RIL AquaGrip FLG Adaptor	–	78200110	VJ00157
63 x 80 VJ RIL AquaGrip FLG Adaptor	–	78200120	VJ00157

## SPECIAL REQUIREMENTS

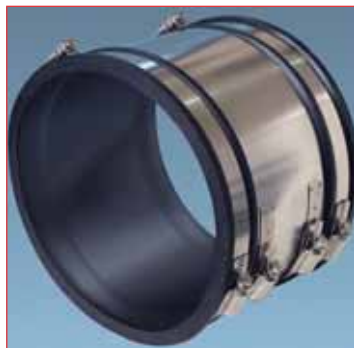
Due to Frazer's unique relationship with Viking Johnson we have access to the huge range of products and sizes available. Please call your local branch with any requirements and we will be able to inform you of delivery and prices on any item.

## Flexible Couplings (Extended Range)

Description	Size (mm)	Frazer Code	Supplier Code
<b>Flex - Seal Range</b>			
<b>Standard Couplings</b>			
FLEX-SEAL Rubber 110-121	4" Plastic to 4" Plastic	73602010	SC120
FLEX-SEAL Rubber 120-137	4" Clay to 4" Clay	73602030	SC137
FLEX-SEAL Rubber 175-200	6" Clay to 6" Clay	73602070	SC200
FLEX-SEAL Rubber 265-290	9" Clay to 9" Clay	73602120	SC290
FLEX-SEAL Rubber 355-385	12" Clay to 12" Clay	73602180	SC385
<b>Drain Couplings</b>			
FLEX-SEAL Rubber 100-115	4" Plastic to 4" Plastic	73603540	DC115
FLEX-SEAL Rubber 120-135	4" Clay to 4" Clay	73603560	DC135
FLEX-SEAL Rubber 150-165	6" Plastic to 6" Plastic	73603570	DC165
FLEX-SEAL Rubber 170-192/110-122	6" Clay to 4" Plastic	73604220	AC1922
<b>Adaptor Couplings</b>			
FLEX-SEAL Rubber 121-136/110-121	4" Plastic to 4" Clay	73604010	AC4000
FLEX-SEAL Rubber 180-200/160-180	6" Plastic to 6" Clay	73604030	AC6000
FLEX-SEAL Rubber 260-285/180-205	9" Clay to 6" Clay	73604050	AC9001
FLEX-SEAL Rubber 110-125/100-115	4" Plastic to 4" Cast Iron	73608040	AC5144

**Features**

- A range of couplings principally designed for jointing pipes in sewage, drainage and other non-pressure applications
- Outer stainless steel ring provides excellent resistance to heavy earth loads and shear forces
- Gives excellent sealing capabilities and has the ability to provide a reliable seal on rough pipe surfaces such as concrete, with a higher performance seal on smooth surfaces such as PVCu
- When used with Flex-Seal bushes, couplings can be used as adaptors between pipes of widely differing outside diameters. In all cases, when the difference in outside diameters to be jointed exceeds 12mm, a bush should be used
- Tested to withstand the air and water tests specified in BS 8005 'British Standard Codes of Practice for Sewerage', BS 8301 'British Standard Codes of Practice for Building Drainage' The Water Services Association's 'Civil Engineering Specifications for the Water Industry 'Sewers for Adoption' and Approved document H to the Building Regulations: 1991



## Flexible Couplings (Extended Range)

Description	Size (mm)	Frazer Code	Supplier Code
<b>Fernco Range</b>			
<b>Straight Coupling</b>			
041-041 38-41 OD	1 1/4" Straight Coupling	73600010	041 - 041
049-049 40-49 OD	1 1/2" Straight Coupling	73600020	049 - 049
062-062 62-56/62-56	2" Straight Coupling	73600030	062 - 062
086-086 86-80/86-80	3" Straight Coupling	73600040	086 - 086
112-112 101-112 OD	4" Straight Coupling	73600050	112 - 112
133-133 127-133 OD	4" Straight Coupling	73600080	133 - 133
<b>Adaptor Coupling</b>			
111-085 104-111/76-85 OD	4" to 3" Plastic Adaptor Coupling	73600320	111 - 085
133-112 111- 133/104-112 OD	4" to 4" Plastic Adaptor Coupling	73600360	133 - 112
163-111 140- 163/101-111 OD	6" to 4" Plastic Adaptor Coupling	73600430	163 - 111
187-111 177- 187/101-111 OD	6" to 4" Plastic Adaptor Coupling	73600440	187 - 111
190-162 177- 190/152-162	6" to 6" Plastic Adaptor Coupling	73600500	190 - 162



**FLEX-SEAL**  
FLEXIBLE COUPLINGS



## No Dig – Pipe Repair System (Extended Range)

Description	Size (mm)	Frazer Code
103mm – Fernco Pipe Doctor®	103	73609108
154mm – Fernco Pipe Doctor®	154	73609110
230mm – Fernco Pipe Doctor®	230	73609112
315mm – Fernco Pipe Doctor®	315	73609114
400mm – Fernco Pipe Doctor®	400	73609116
480mm – Fernco Pipe Doctor®	480	73609118
560mm – Fernco Pipe Doctor®	560	73609120

### Pipe repair made easy by Fernco

Developed by Flex-Seal but marketed and distributed under the Fernco brand name, the Pipe Doctor® is the latest development in high performance no-dig pipe repair solutions that provides a quick and easy method of repairing damaged drainage and sewerage pipes.

The Fernco Pipe Doctor® is installed internally and therefore eradicates the need for costly, disruptive and time consuming excavation.

The Pipe Doctor® is available in a range of portable and easy to store kits that can repair pipes that have a bore diameter of between 100 to 525mm and can be applied to most pipe materials including uPVC, clay, cast iron, ductile iron, pitch fibre and asbestos.

Each kit contains the necessary equipment required to carry out an efficient pipe repair including protective clothing, fibreglass mat, protective ground sheet, tie secures and a two part mix resin.

The exclusive resin is supplied in a ready to mix double sealed bag unique to the Pipe Doctor®. The bag has been precisely measured and prepared to contain the correct amounts of resin, therefore eliminating any waste.

The Pipe Doctor® is ideal for specialised pipe repair contractors who carry out CCTV surveys and repairs as it complements standard installation equipment that contractors use, i.e. pipe packer, air push rods, compressor/air tank, etc.

A range of Pipe Doctor Contractor Packs can be supplied that include all the necessary equipment to successfully repair a damaged pipe system. Ask your local Frazer branch for further information.

### Features

- No need for costly and time consuming excavation work
- Fast, reliable and watertight repairs
- Permanent repair of pipes damaged due to corrosion, cracks and infiltration irrespective of age or type of pipe material



## Flexible Saddle Connectors (156-300mm Diameter)

### Drain and Sewage Pipe Connection – Designed for connecting lateral pipes into main concrete or clay sewers

Flex-Seal saddles provide a cost effective, quick and easy to use solution for the efficient connection of lateral pipes to connector or clay pipes. Available in three types (FA150B, FA150ST and FA200B) Flex-Seal's Flexible Saddles are principally designed for use with reinforced concrete and clay pipes.

1. The FA150B is used to connect all 150mm diameter drainage pipes on the lateral and can be combined with a Flex-Seal Bush (BC12/166) to fit lateral pipes that have a size range of 156-166mm O.D, and also BC06/178 to fit lateral pipes that have a size range of 170-177mm. Suitable for concrete pipes that have a wall thickness from 50mm-150mm (DN450-DN1500).
2. The FA200B connects all 200mm and various 225mm diameter pipes and can be combined with a Flex-Seal Bush (BC21/205) to fit lateral pipe sizes in the range Of 198mm-208mm O.D.  
Suitable for concrete pipes that have a wall thickness from 50mm – 150mm (DN675-DN1500).
3. The FA150ST is a 150mm Flexible Saddle for clay and concrete pipes DN250 to DN300. Suitable for lateral pipe sizes in the range Of 170mm-190mm O.D, the FA150ST can be combined with a Bush (BC12/190) in order to fit lateral pipe sizes in the range of 156 – 166mm O.D, and also (BC08/170) in order to fit lateral pipe sizes in the range of 170-177mm. Suitable for clay and concrete pipes that have a wall thickness from 22mm-51mm.



Flex-Seal pioneered the development of the Flexible Saddle in the marketplace and obtained approval from the Water Research Centre (WRc). The saddles can withstand a hydrostatic pressure of 1 bar and a vertical load of 2 tonnes therefore preventing earth loads from forcing the lateral into the main sewer system.

## Sewer Saddle

### Drain and Sewage Pipe Connection

– Provides a fast and economical method of making sewer connections

TA11090	152-395 o.d pipe	TA16090	200-395 o.d pipe
TA11045	152-395 o.d pipe	TA16045	200-395 o.d pipe

The Sewer Saddle is a faster and more economical method for contractors to connect lateral 45° and 90° pipes to plain walled sewer systems.

The Fernco design uses a combination of durable thermoplastic compound and a stainless steel shielding band which is strapped on using 1.4301 (304) clamping bands around the barrel of the pipe. The watertight seal prevents any potential sewer main leaks and the quick take-up system increases the speed of installation and reduces labour cost.

The Sewer Saddle is extremely durable due to the band and frame being manufactured from 1.4301 (304) stainless steel and the saddle being produced using a specifically engineered high durometer PVC which is highly resistant to caustic chemicals, bacteria and fungi in order to maintain a positive seal.

Available in 2 size ranges 112 (152-395mm OD) and 162 (200-395mm OD), the Fernco Sewer Saddle has been tested to 0.5bar of pressure with no subsequent water leakage.

The saddle is not suitable for use on structured walled pipes.



(Approvals pending)